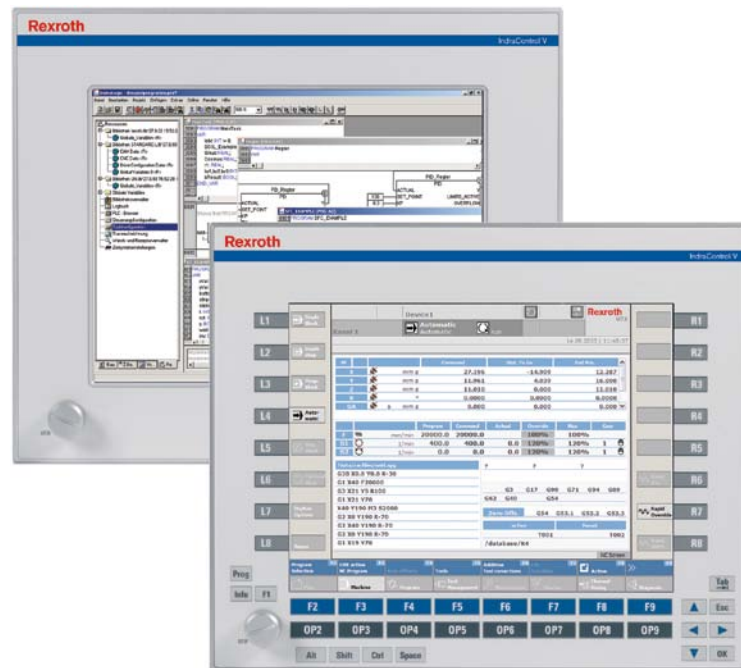


Embedded PC

12,1" TFT-display and SVGA-resolution IndraControl VEP 40



Embedded PC

12,1" TFT-display and SVGA-resolution ■ IndraControl VEP 40

Documentation

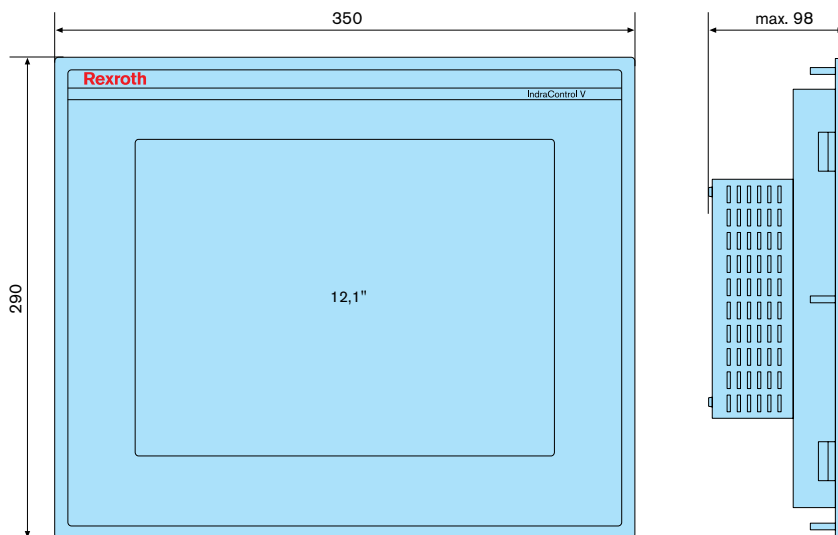
**Technical data**

	VEP 40.3 CE	VEP 40.4 DB	VEP 40.4 BK	VEP 40.5 DB	VEP 40.5 EI
Processor					
CPU	Celeron 600 MHz	Atom 1.1 GHz	Atom 1.1 GHz	Atom 1.1 GHz	Atom 1.1 GHz
Operating system	Windows CE 4.2	Windows CE 6.0 / Windows XPe	Windows XPe	Windows XPe / Windows 7	Windows XPe / Windows 7
Memory					
Application	512 MB	1 GB	1 GB	2 GB	2 GB
Flash size	1 GB	1 GB / 4 GB	4 GB	4 GB / 8 GB	4 GB / 8 GB
CompactFlash	2	2	2	2	2
	CF sockets	CF sockets	CF sockets	CF sockets	CF sockets
Display					
Type	TFT	TFT	TFT	TFT	TFT
Size	30.7 cm (12.1")	30.7 cm (12.1")	30.7 cm (12.1")	30.7 cm (12.1")	30.7 cm (12.1")
Colors/gray tones	256.000	256.000	256.000	256.000	256.000
	Colors	Colors	Colors	Colors	Colors
Resolution	800 x 600	800 x 600	800 x 600	800 x 600	800 x 600
Operation					
Type	Touch screen	Touch screen	Operator keys	Touch screen	Touch screen
	Through virtual keyboard	Through virtual keyboard	Through virtual keyboard	Through virtual keyboard	Through virtual keyboard
Function keys	0	0	16	0	16
Machine keys	0	0	16	0	16
Additional keys	0	0	14	0	14
Interfaces					
Ethernet	2 x Ethernet TCP/IP	1 x Ethernet TCP/IP	1 x Ethernet TCP/IP	2 x Ethernet TCP/IP	2 x Ethernet TCP/IP
USB	2 x USB	3 x USB	3 x USB	3 x USB	3 x USB
Seriell	1 x RS232	1 x RS232	1 x RS232		
Fieldbus					
PROFIBUS	1 x PROFIBUS DP-Master				
Electrical data					

Embedded PC

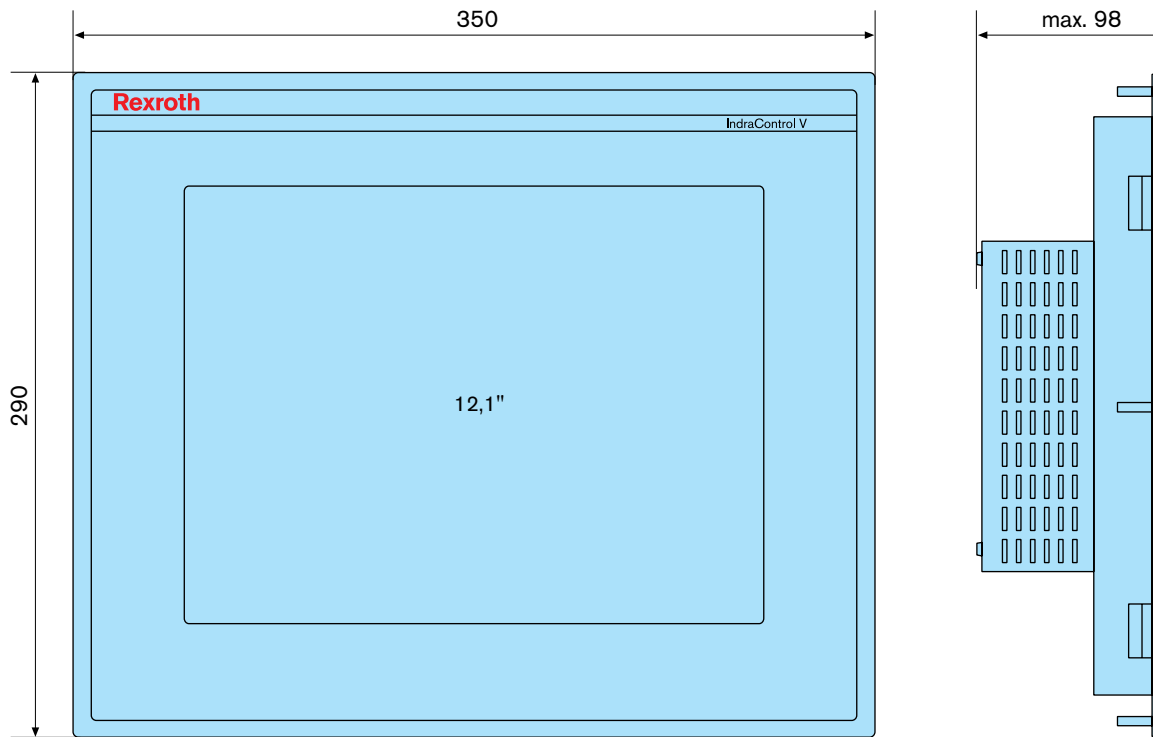
12,1" TFT-display and SVGA-resolution ■ IndraControl VEP 40

Supply voltage	U	24 V DC	24 V DC	24 V DC	24 V DC	24 V DC
Min.	U _{min}	19 V DC	19 V DC	19 V DC	19 V DC	19 V DC
Max.	U _{max}	30 V DC	30 V DC	30 V DC	30 V DC	30 V DC
Power consumption	[W]	36	36	36	36	36
UPS		Short-time UPS for data backup on compact-flash				
Protection						
Overall protection category		IP20	IP20	IP20	IP20	IP20
Category at front		IP65	IP65	IP65	IP65	IP65
Ambient conditions						
Permissible temperature (operation)		+5 °C ... +45 °C				
Permissible relative humidity (operation)		5 % ... 85 %, EN 61131-2				

Dimensions

		VEP 40.3 CE	VEP 40.4 DB	VEP 40.4 BK	VEP 40.5 DB	VEP 40.5 EI
Dimensions						
Height H	[mm]	290	290	290	290	290
Width B	[mm]	350	350	350	350	350
Depth T	[mm]	86	51	51	60	51

Embedded PC

12,1" TFT-display and SVGA-resolution ■ IndraControl VEP 40**Ordering information**

Type code	Description	Part number:
VEP40.3CEU-256NA-MAD-128-NN-FW	IndraControl VEP 40, PROFIBUS DP, control component	R911170854
VEP40.4DBN-512NN-A2D-NNN-NN-FW	IndraControl VEP 40, visualization	R911171835
VEP40.4BKN-512NN-A2D-NNN-NN-FW	IndraControl VEP 40, visualization	R911172476
VEP40.5DBN-2G02E-A3D-NNN-NN-FW	IndraControl VEP 40, visualization	R911173050
VEP40.5EIN-2G02E-A3D-NNN-NN-FW	IndraControl VEP 40, visualization	R911172936

Firmware

Type code	Description	Part number:
FWA-VEP*03-CWL-01VRS-D0	Firmware for IndraControl VEP xx.3	R911170958
FWA-VEP*04-CWN-10VRS-D0-A*	Firmware for IndraControl VEP xx.4 (in preparation)	R911328967
FWA-VEP*04-XPE-01VRS-D0-A*	Firmware for IndraControl VEP xx.4 (in preparation)	R911334113
FWA-VEP*05-XPE-01VRS-D0-A*	Firmware für IndraControl VEH30.2 mit Windows XPe	R911337390
FWA-VEP*05-W7*-01VRS-D0-A*	Firmware für IndraControl VEPxx.4-Atom N455 (Windows 7)	R911337389

Documentation

Embedded PC

12,1" TFT-display and SVGA-resolution ■ IndraControl VEP 40

Type code	Description	Part number:
DOK-SUPPL*-VEP**.3****-PR01-DE-P	IndraControl VEP** .03 project planning manual in German	R911323263
DOK-SUPPL*-VEP**.3****-PR01-EN-P	Operating manual English, printed version	R911323264
DOK-SUPPL*-VEP*XX.4****-PR01-DE-P	Operating manual German, printed version	R911323873
DOK-SUPPL*-VEP*XX.4****-PR01-EN-P	Operating manual German, printed version	R911323874
DOK-SUPPL*-VEP*XX.5****-ITRS-DE-P	Project development tool WinStudio (Lite, 500 variables)	R911337774
DOK-SUPPL*-VEP*XX.5****-ITRS-EN-P	IndraControl VAM 11.1 and VAM 41.1 project planning in English	R911337775

Bosch Rexroth AG

Postfach 13 57
97803 Lohr, Germany
Bgm.-Dr.-Nebel-Str. 2
97816 Lohr, Germany
Tel. +49 9352 18-0
Fax +49 9352 18-8400
www.boschrexroth.com/electrics

Local contact information can be found at:

www.boschrexroth.com/adressen

The data specified above only serve to describe the product. As our products are constantly being further developed, no statements concerning a certain condition or suitability for a certain application can be derived from our information. The information given does not release the user from the obligation of own judgment and verification.

It must be remembered that our products are subject to a natural process of wear and aging.