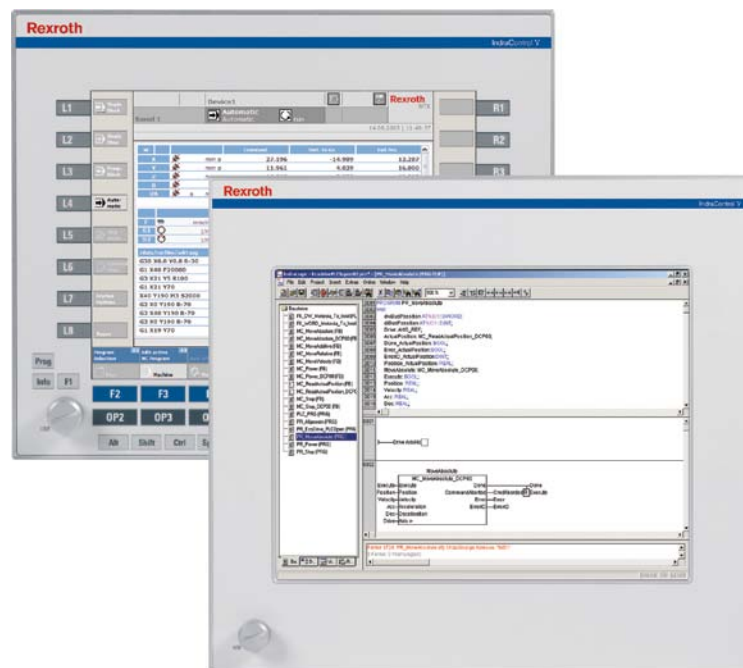


Panel-PC  
15" display  
IndraControl VEP 50



Panel-PC

**15" display ■ IndraControl VEP 50**

Documentation

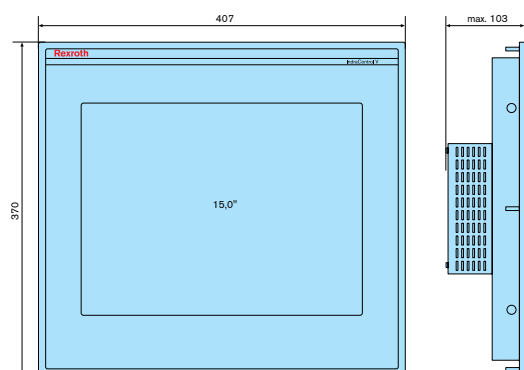
**Technical data**

	VEP 50.3 CH	VEP 50.4 DE	VEP 50.4 BI	VEP 50.5 DF
<b>Processor</b>				
CPU	Celeron 600 MHz	Atom 1.1 GHz	Atom 1.1 GHz	Atom 1.1 GHz
Operating system	Windows CE 4.2	Windows CE 6.0 / Windows XPe	Windows XPe	Windows XPe / Windows 7
<b>Memory</b>				
Application	512 MB	1 GB	1 GB	2 GB
Flash size	1 GB	1 GB / 4 GB	4 GB	4 GB / 8 GB
CompactFlash	2	2	2	2
	CF sockets	CF sockets	CF sockets	CF sockets
<b>Display</b>				
Type	TFT	TFT	TFT	TFT
Size	38.1 cm (15")	38.1 cm (15")	38.1 cm (15")	38.1 cm (15")
Colors/gray tones	256.000	256.000	256.000	256.000
	Colors	Colors	Colors	Colors
Resolution	1024 x 768	1024 x 768	1024 x 768	1024 x 768
<b>Operation</b>				
Type	Touch screen	Touch screen	Operator keys	Touch screen
	Through virtual keyboard	Through virtual keyboard	Through virtual keyboard	Through virtual keyboard
Function keys	0	0	16	16
Machine keys	0	0	16	16
Additional keys	0	0	14	14
<b>Interfaces</b>				
Ethernet	2 x Ethernet TCP/IP	1 x Ethernet TCP/IP	1 x Ethernet TCP/IP	2 x Ethernet TCP/IP
USB	2 x USB 2.0	3 x USB	3 x USB	3 x USB
Seriell	1 x RS232	1 x RS232	1 x RS232	1 x
<b>Fieldbus</b>				
PROFIBUS	1 x PROFIBUS DP-Master (Optional)			
<b>Electrical data</b>				
Supply voltage	U	24 V DC	24 V DC	24 V DC

Panel-PC

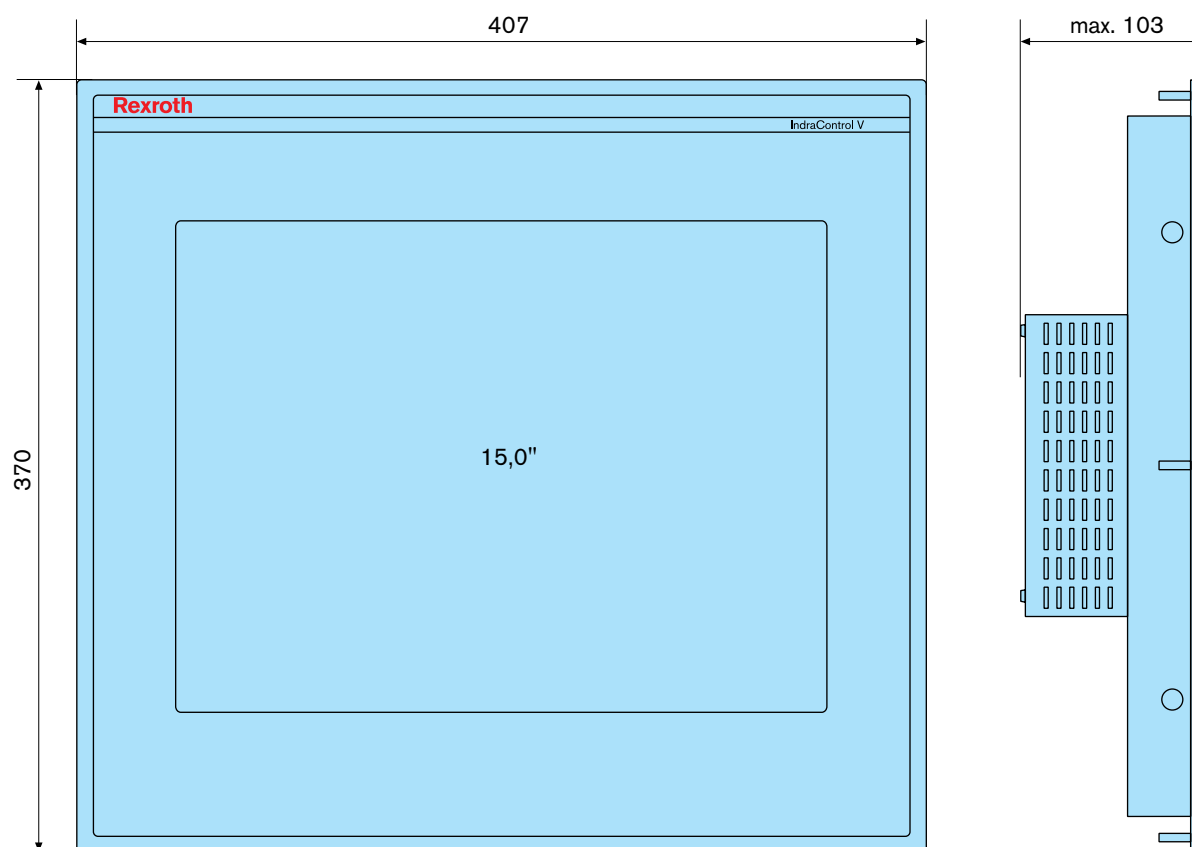
**15" display ■ IndraControl VEP 50**

Min.	U <sub>min</sub>	19 V DC	19 V DC	19 V DC	19 V DC
Max.	U <sub>max</sub>	30 V DC	30 V DC	30 V DC	30 V DC
Power consumption	[W]	36	36	36	36
UPS		Short-time UPS for data backup on compact-flash			
<b>Protection</b>					
Overall protection category		IP20	IP20	IP20	IP20
Category at front		IP65	IP65	IP65	IP65
<b>Ambient conditions</b>					
Permissible temperature (operation)		+5 °C ... +45 °C			
Permissible relative humidity (operation)		5 % ... 85 %, EN 61131-2			

**Dimensions**

		VEP 50.3 CH	VEP 50.4 DE	VEP 50.4 BI	VEP 50.5 DF
<b>Dimensions</b>					
Height H	[mm]	370	370	370	370
Width B	[mm]	407	407	407	407
Depth T	[mm]	88	53	53	65

Panel-PC

**15" display ■ IndraControl VEP 50****Ordering information**

Type code	Description	Part number:
VEP50.3CHU-256NA-MAD-128-NN-FW	IndraControl VEP 50, PROFIBUS DP, control component	R911170855
VEP50.4DEN-512NN-A2D-NNN-NN-FW	IndraControl VEP 50, visualization	R911171924
VEP50.4BIN-512NN-A2D-NNN-NN-FW	IndraControl VEP 50, visualization	R911172477
VEP50.5DFN-2G02E-A3D-NNN-NN-FW	IndraControl VEP 50, visualization	R911172937

Panel-PC

**15" display ■ IndraControl VEP 50**

## Firmware

Type code	Description	Part number:
FWA-VEP*03-CWL-01VRS-D0	Firmware for IndraControl VEP xx.3	R911170958
FWA-VEP*04-CWN-10VRS-D0-A*	Firmware for IndraControl VEP xx.4 (in preparation)	R911328967
FWA-VEP*04-XPE-01VRS-D0-A*	Firmware for IndraControl VEP xx.4 (in preparation)	R911334113
FWA-VEP*05-XPE-01VRS-D0-A*	Firmware für IndraControl VEH30.2 mit Windows XPe	R911337390
FWA-VEP*05-W7*-01VRS-D0-A*	Firmware für IndraControl VEPxx.4-Atom N455 (Windows 7)	R911337389

## Documentation

Type code	Description	Part number:
DOK-SUPPL*-VEP**_3****-PR01-DE-P	IndraControl VEP**_03 project planning manual in German	R911323263
DOK-SUPPL*-VEP**_3****-PR01-EN-P	Operating manual English, printed version	R911323264
DOK-SUPPL*-VEP*XX_4****-PR01-DE-P	Operating manual German, printed version	R911323873
DOK-SUPPL*-VEP*XX_4****-PR01-EN-P	Operating manual German, printed version	R911323874
DOK-SUPPL*-VEP*XX_5****-ITRS-DE-P	Project development tool WinStudio (Lite, 500 variables)	R911337774
DOK-SUPPL*-VEP*XX_5****-ITRS-EN-P	IndraControl VAM 11.1 and VAM 41.1 project planning in English	R911337775

**Bosch Rexroth AG**

Postfach 13 57  
97803 Lohr, Germany  
Bgm.-Dr.-Nebel-Str. 2  
97816 Lohr, Germany  
Tel. +49 9352 18-0  
Fax +49 9352 18-8400  
[www.boschrexroth.com/electrics](http://www.boschrexroth.com/electrics)

**Local contact information can be found at:**

[www.boschrexroth.com/adressen](http://www.boschrexroth.com/adressen)

The data specified above only serve to describe the product. As our products are constantly being further developed, no statements concerning a certain condition or suitability for a certain application can be derived from our information. The information given does not release the user from the obligation of own judgment and verification.

It must be remembered that our products are subject to a natural process of wear and aging.